



MONTHLY MEMBERSHIP PROGRESS REPORT

District 49 B

Results as of: 05/31/2019

GMT: HOWARD HUDSON

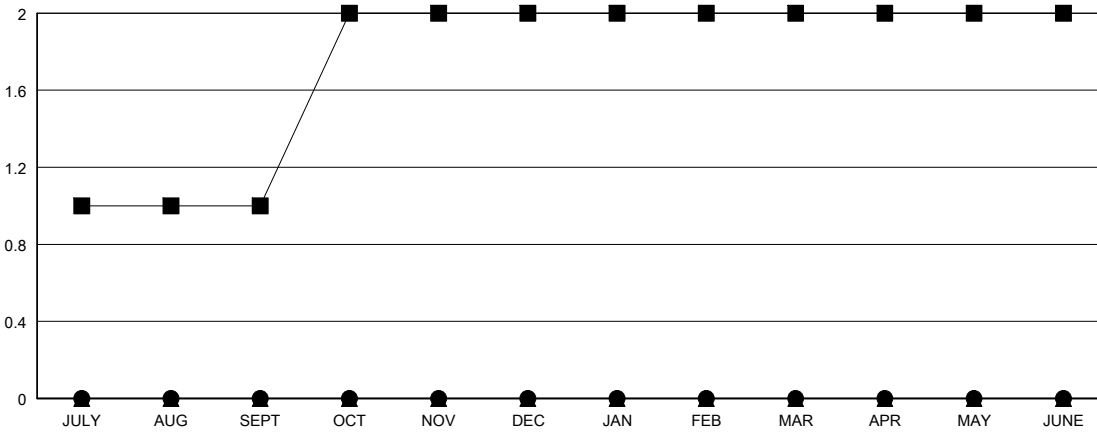
LOCATION ALASKA

GMT CA

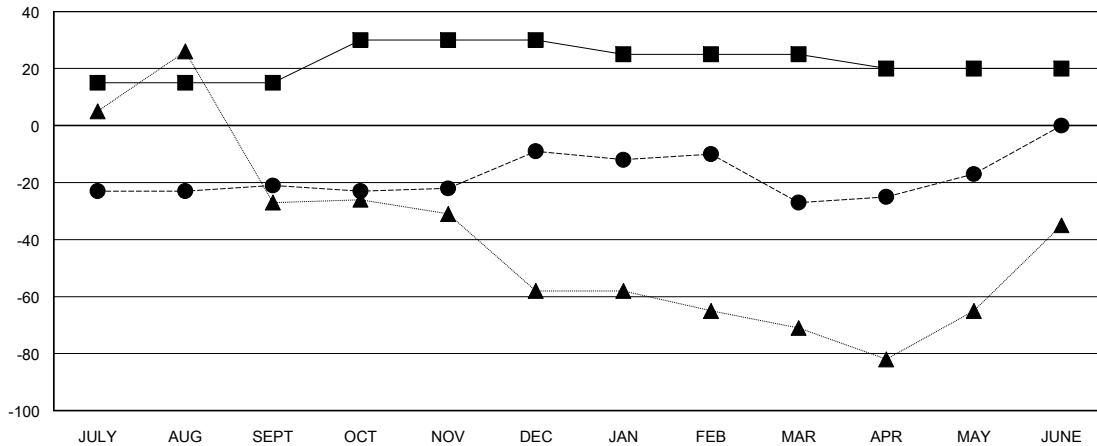
Clubs			
RESULTS FOR 2018-2019			
QUARTER	NEW CLUB GOAL	NEW CLUBS	DROPPED CLUBS
JULY/AUG/SEPT	1	0	0
OCT/NOV/DEC	1	0	0
JAN/FEB/MAR	0	0	1
APR/MAY/JUNE	0	0	0

Members			
RESULTS FOR 2018-2019			
QUARTER	MEMBER GROWTH NET GOAL	MEMBER GROWTH ACTUAL	DROPPED MEMBERS ACTUAL (including transfers)
JULY/AUG/SEPT	15	26	45
OCT/NOV/DEC	15	34	20
JAN/FEB/MAR	-5	17	35
APR/MAY/JUNE	-5	20	10

GOALS AND ACTUAL NEW CLUBS CUMULATIVE



GOALS AND ACTUAL MEMBERS CUMULATIVE



DROPPED CLUBS: 1

18 CLUBS OF 28 ADDED 1 OR MORE NEW MEMBERS

GENDER DISTRIBUTION	
MALE	480 (59.26%)
FEMALE	330 (40.74%)
Women Percentage Fiscal Year Goal: 50%	

DROPPED MEMBERS	
DECEASED	8
CLUB CANCELLED	11
OTHER	91
TOTAL	110

[CLICK HERE FOR CUMULATIVE MEMBERSHIP DATA](#)

TOTAL FAMILY UNIT MEMBERS	202
FAMILY MEMBERS PAYING HALF DUES	103